

Industrial Construction, Tanks, Vessels, and Fabrication



An Employee Owned Diversified
Construction Services Company

BATON ROUGE

16347 Old Hammond Hwy.
Baton Rouge, LA 70816
(225) 226-7433

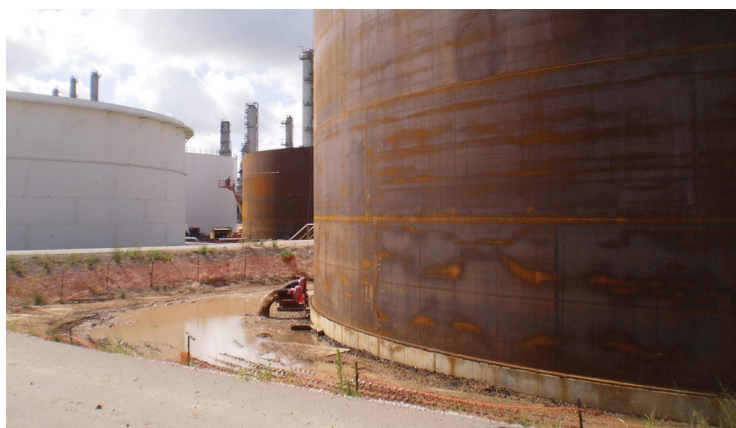
HOUSTON

3400 Awesome Lane
La Porte, TX 77571
(281) 470-7252

PALA - Diversified Construction Services

In business since 1973, PALA is a Gulf-Coast based Merit Shop Employee Owned Industrial Contractor performing construction, tank construction, tank maintenance, vessel design and fabrication services.

We are licensed throughout the United States, with 75% of our annual work in the Refining and Petrochemical Industry. Additional industries served include: Bulk Liquid Terminals, Food and Beverage, and Government.



PALA's Core Values

- 01 FOCUS ON SAFETY FIRST
- 02 EXCEPTIONAL QUALITY THROUGH TEAMWORK
- 03 EMPLOYEE DEVELOPMENT
- 04 EARN LONG TERM CLIENT RELATIONSHIPS

Safety

PALA's "Target Zero" safety philosophy starts at the top with Leadership. Safety is achieved with commitment from each employee building a culture of safe behaviors.

Quality

Mirroring our commitment to safety, Quality starts at the top and is built into our projects from the very beginning. The focus on quality—from estimating, to proper education and training, execution, observations to measurements and learning—drives our "Do it Right the First Time" mentality.

Employees

PALA has a number of experienced and dedicated employees cross trained in industry standards and PALA safety and quality control procedures. A comprehensive craft and supervisor training program provides employees with the opportunity to upgrade their skills, and experience a career in the construction industry.

Representative Client List

AMSTY	DOW CHEMICAL	HUNTSMAN	METHANEX USA	OXYCHEM, INC	SHELL USA
BP	DUPONT	IMTT	MONSANTO	PBF	SYNGENTA
BASF CORP.	EASTMAN	LONE STAR NGL	MOTIVA ENTERPRISE	PROCTER & GAMBLE	THE J.M. SMUCKER COMPANY
BAYER	EXXONMOBIL	LYONDELLBASELL	NASA	PHILLIPS 66	TOTAL PETROCHEMICAL
DAIKIN	FLINT HILLS	MARATHON PETROLEUM	NALCO	RUBICON	WESTLAKE CHEMICAL



palagroup.com

Industrial Construction Services

At PALA, we perform turnkey construction services to meet a variety of client needs. We self-perform construction in a number of disciplines including mechanical piping, structural steel, equipment setting, and civil. We perform projects on a lump-sum, unit-price and cost-plus basis.

Capital Construction Projects

PALA maintains permanent staff and alliance contracts in a number of client facilities in the petrochemical and process industries to perform capital construction projects. We have extensive experience performing small and large capital projects inside operating units, with our focus on the reduction of client total installed cost and minimizing the opportunity for unsafe conditions during construction and operation.



GENERAL INDUSTRIAL CONSTRUCTION

- New Construction
- Small & Large Capital Projects
- Alliance Contracts
- Mechanical Piping
- Structural Steel
- Equipment Setting
- Civil

Aboveground Storage Tank Services

At PALA, we provide Turnkey Tank/Tank Farm design and construction including engineering, site work, foundations, piping, and tankage. We have expertise in the design, fabrication, and erection of aboveground storage tanks built under the API-650, API-620, and AWWA standards.

Tank Maintenance

PALA manages complete tank farm maintenance. From decommissioning to returning to service, PALA defines and builds project scope and performs turnkey handling of tank turnarounds. Tanks are built to API-653 standards. PALA is capable of maintenance for foundations and civil work, site grading and dike repairs.

PALA's New Seal Department

- New Installation and Repair of Primary and Secondary Seals for Internal and External Floating Roofs
- In-Service Seal Repair, In-Service Seal Inspection
- New Aluminum (IFR) Installation and Repairs
- New Aluminum Domes Installation and Repairs
- (AST) Aboveground Storage Tank Products

Specializing in Alloys:

PALA's tank and vessel experience includes over 350 welding procedures covering weld types such as: stainless, duplex, hastelloy, monel, Inconel, and more.



TANK CONSTRUCTION & MAINTENANCE

- Engineering
- Foundations / Dike Installations
- Field Erection
- Retrofits & Repairs
- Model Reviews & 3D Scanning/Strapping
- Regional Tank Farm Maintenance
- Internal & External Piping
- ASME Vessel & Sphere Repairs

Fabrication Shop Services

PALA's fabrication facilities are located in Baton Rouge and Hammond, Louisiana with approximately 94,000 square feet under roof and over 17 acres of laydown / assembly area. **PALA's maximum capacities are:** 130' length, 16' diameter, and 75 tons. We are holders of "R", "U", "U2", and "S" stamps and are authorized to design, fabricate and repair coded pressure vessels.

Specializing in Alloys:

With a 10,000 square foot shop solely dedicated to alloys, PALA's fabrication experience covers weld types such as: stainless steel, duplex, hastelloy, monel, titanium, & more.



SHOP FABRICATION SERVICES

- ASME Div. 1 & 2 Code Vessels
- ASME Vessel & Sphere Repair
- U, U2, R & S Stamps
- API-650/620 & AWWA Tanks
- Vessel Wall Thickness up to 3.5"
- Process Skids
- Section VIII Pressure Parts
- Piping



READY TO SEE WHAT WE CAN DO FOR YOU?

To learn more about PALA's services or to request a quote for your next project, call us at **(225) 226-7433** or email **estimating@palagroup.com**.

BATON ROUGE

16347 Old Hammond Hwy.
Baton Rouge, LA 70816
P (225) 226-7433

HOUSTON

3400 Awesome Lane
La Porte, TX 77571
P (281) 470-7252



palagroup.com